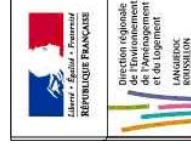
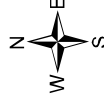
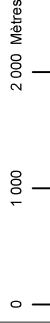
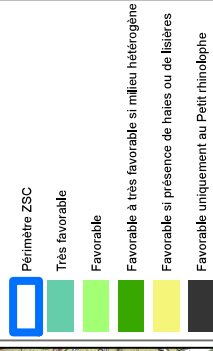
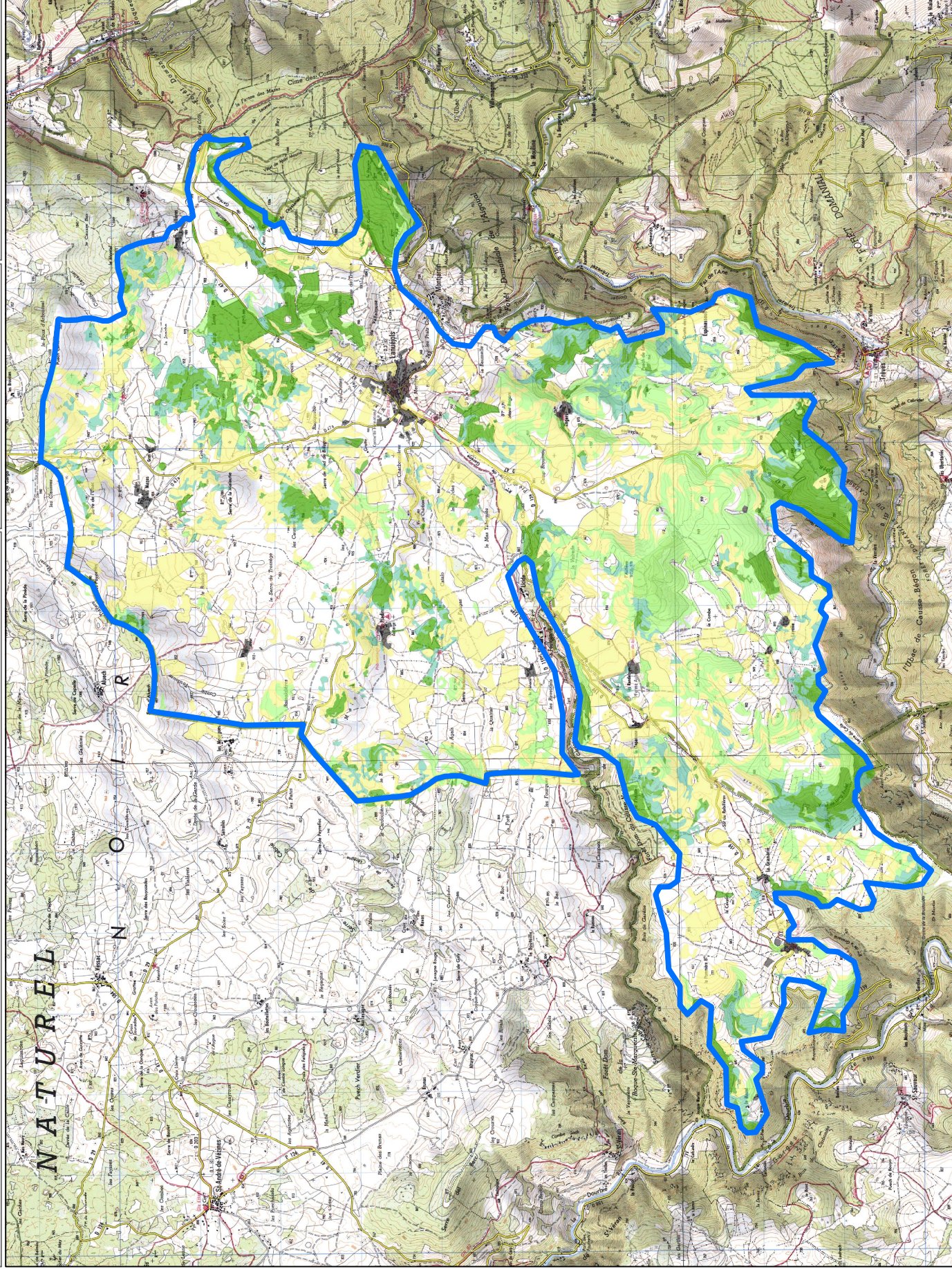


# HABITAT POTENTIEL DES CHIROPTERES D'INTERET COMMUNAUTAIRE Petit Rhinolophe, Grand Rhinolophe, Rhinolophe euryale



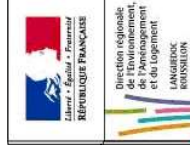
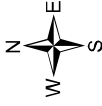
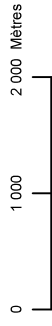
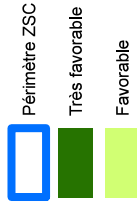
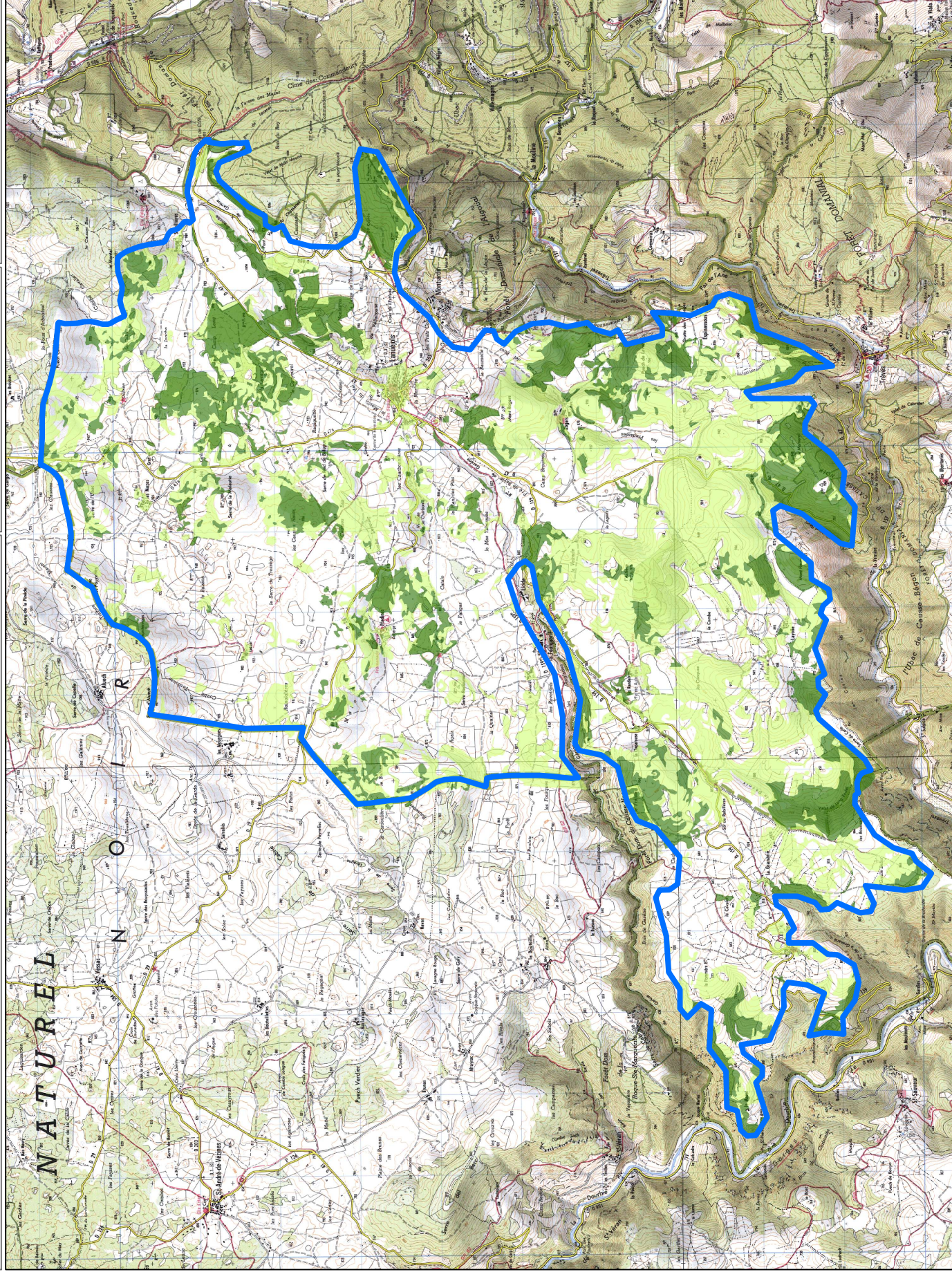
## CARTE N° 12



# HABITAT POTENTIEL DES CHIROPTERES D'INTERET COMMUNAUTAIRE Barbastelle d'Europe



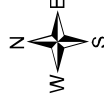
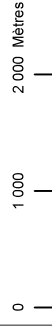
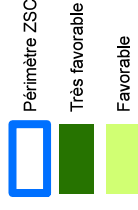
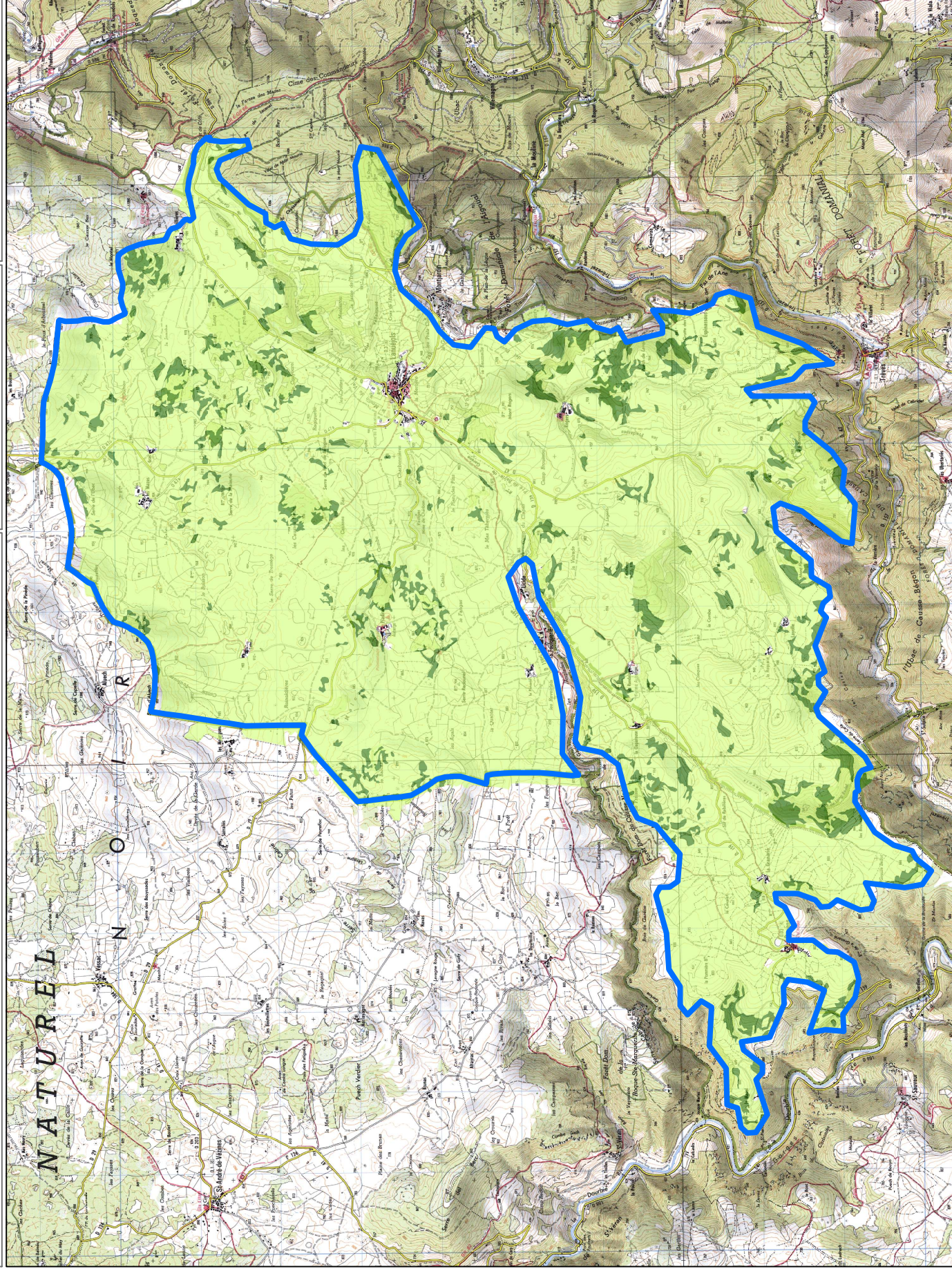
CARTE N°  
**13**



# HABITAT POTENTIEL DES CHIROPTERES D'INTERET COMMUNAUTAIRE Minoptère de Schreibers



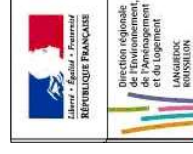
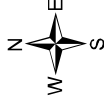
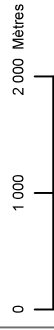
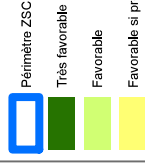
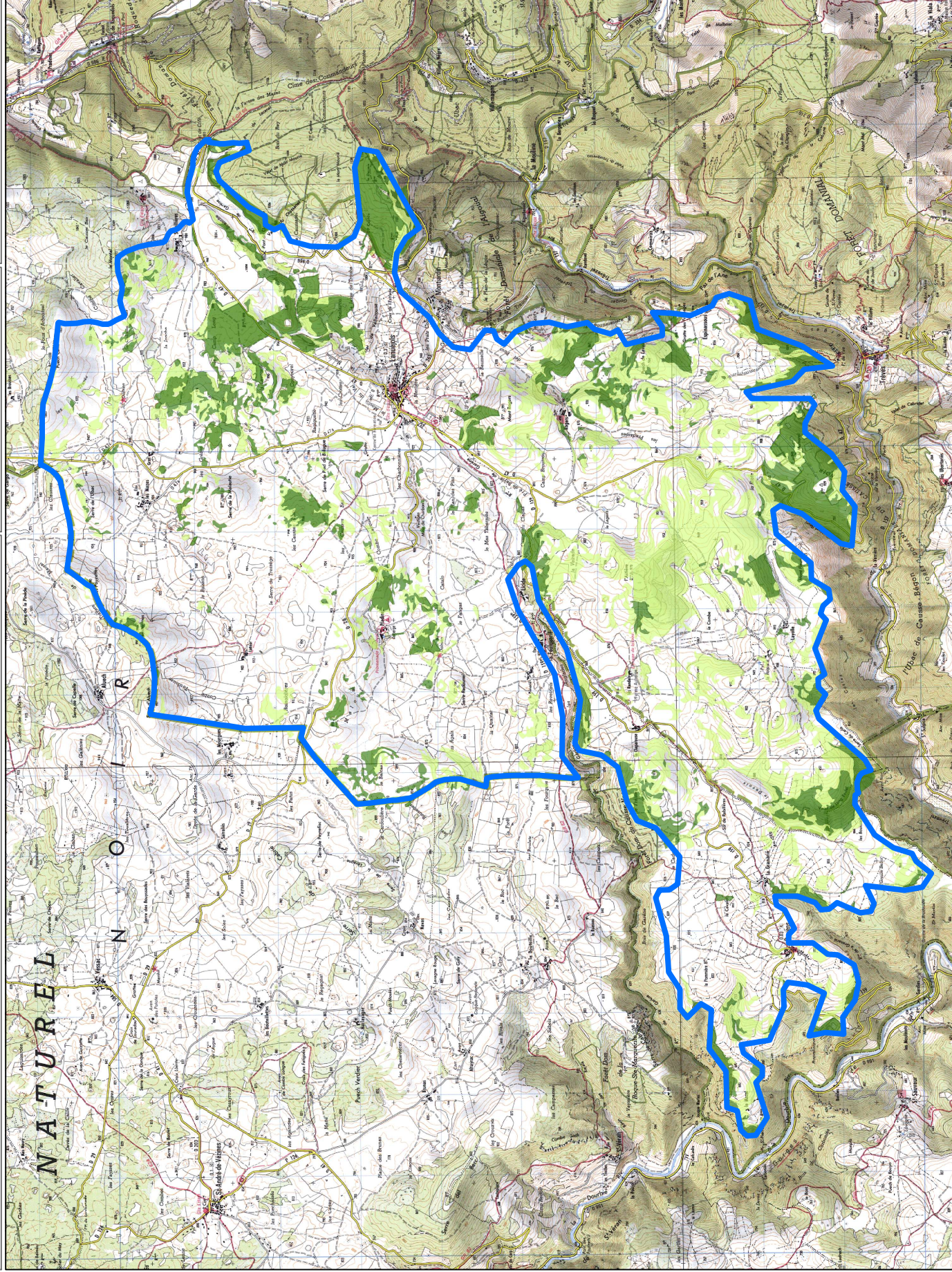
**CARTE N°  
14**



# HABITAT POTENTIEL DES CHIROPTERES D'INTERET COMMUNAUTAIRE Murrin de Beschtein



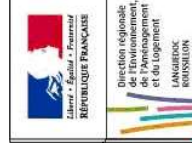
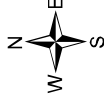
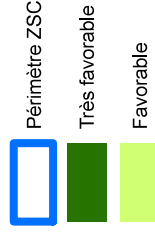
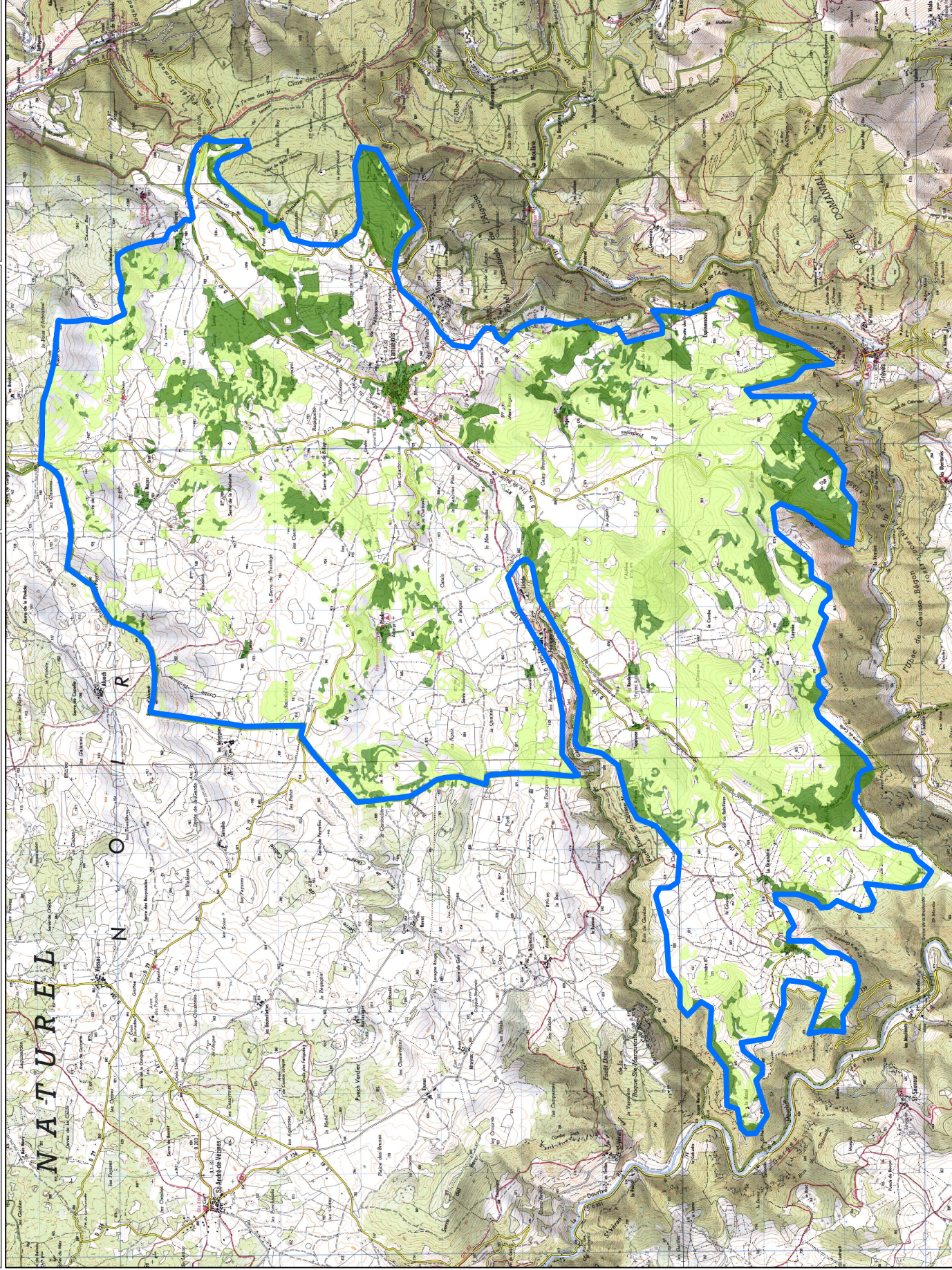
## CARTE N° 15



# HABITAT POTENTIEL DES CHIROPTERES D'INTERET COMMUNAUTAIRE Murin à oreilles échancrées



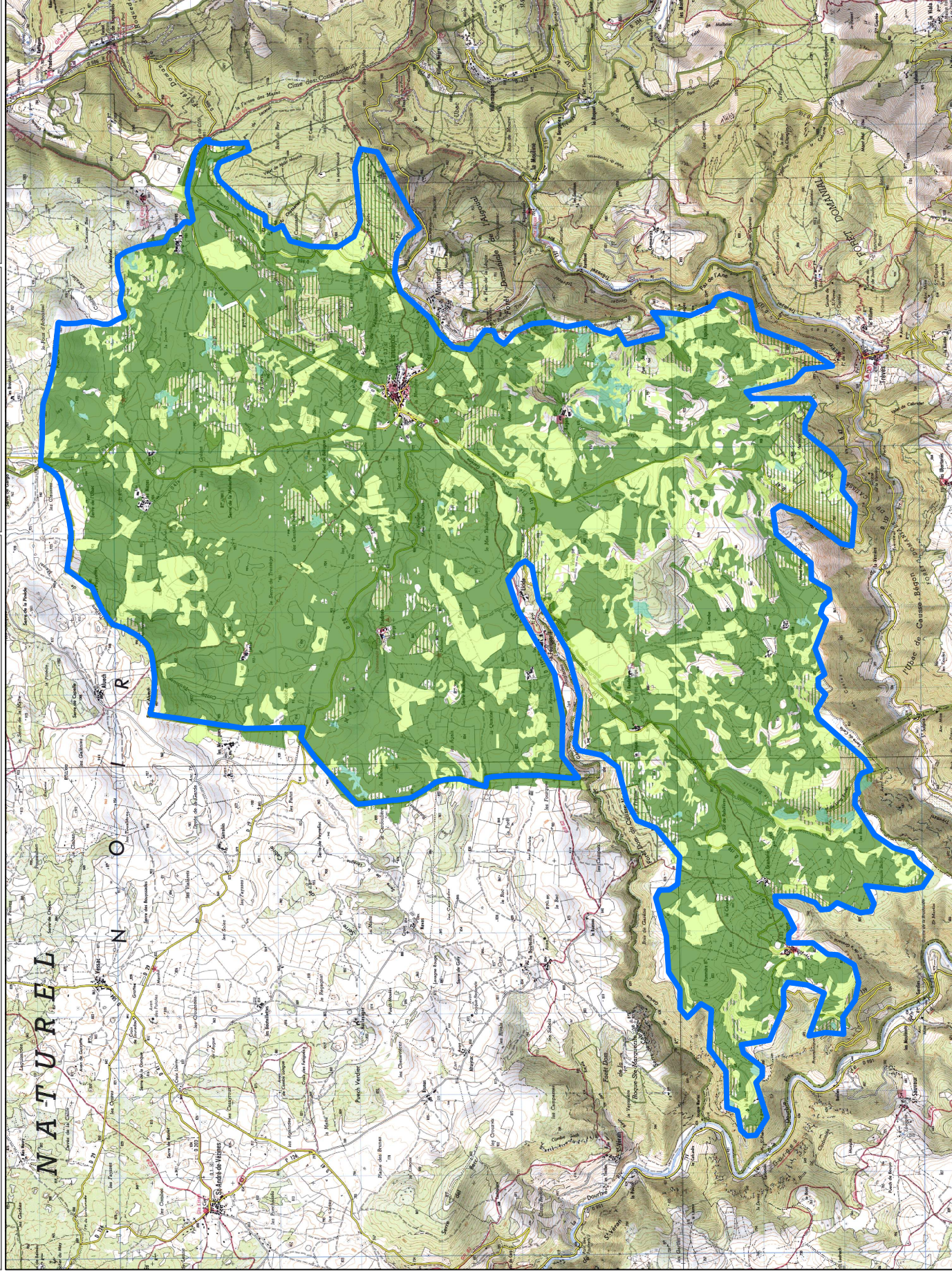
## CARTE N° 16



# HABITAT POTENTIEL DES CHIROPTERES D'INTERET COMMUNAUTAIRE Grand murin



## CARTE N° 17



- Périmètre ZSC
- Très favorable
- Très favorable si strate herbacée importante (sup à 70%)
- Favorable
- Favorable si strate herbacée importante (sup à 70%)

0 1 000 2 000 Mètres

