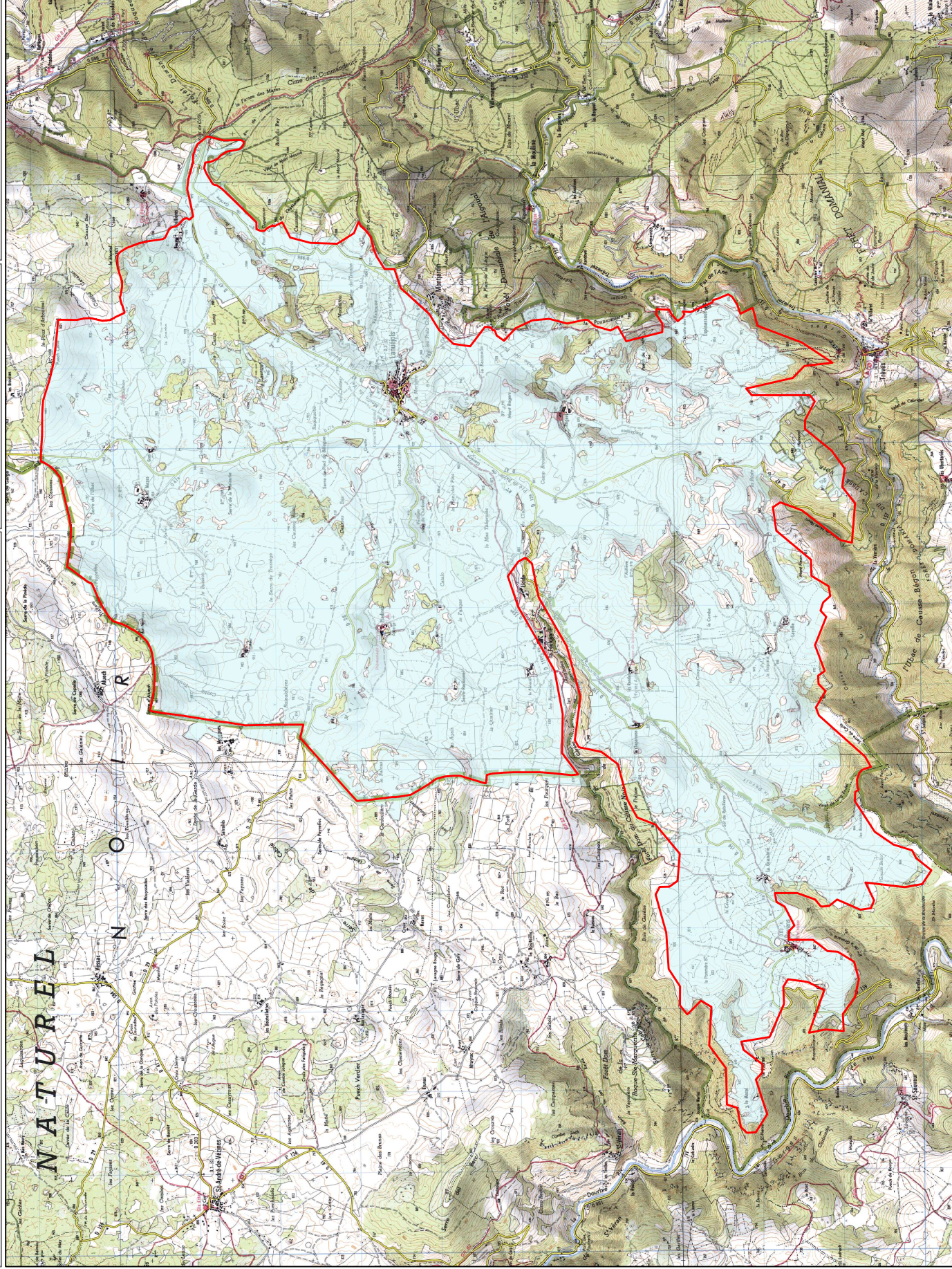


HABITAT POTENTIEL DES OISEAUX D'INTERET COMMUNAUTAIRE Alouette lulu

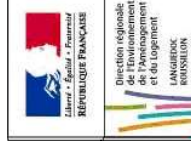
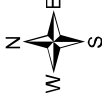


CARTE N°
19



 Périmètre ZPS
 Alouette lulu

0 1 000 2 000 Mètres

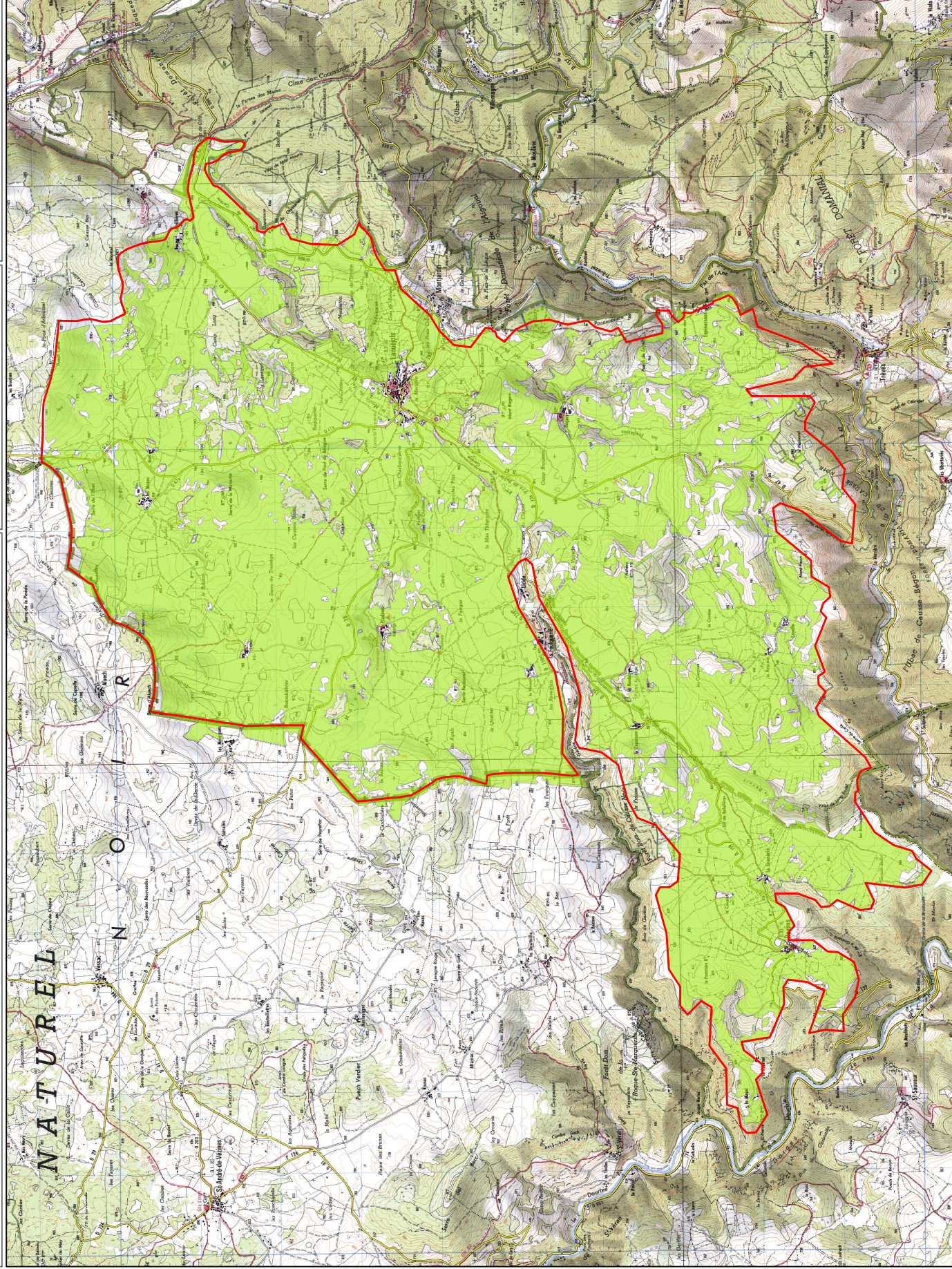


Document d'objectifs (DOCOB) des sites Natura 2000
FR 910 1381et FR 911 2014 "Causse Noir"

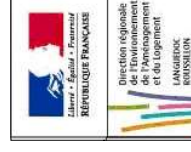
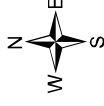
HABITAT POTENTIEL DES OISEAUX D'INTERET COMMUNAUTAIRE Pie-grèche écorcheur



CARTE N° 20



-  Périmètre ZPS
-  Pie-grèche écorcheur



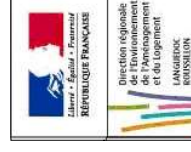
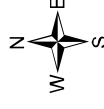
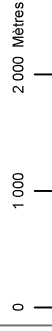
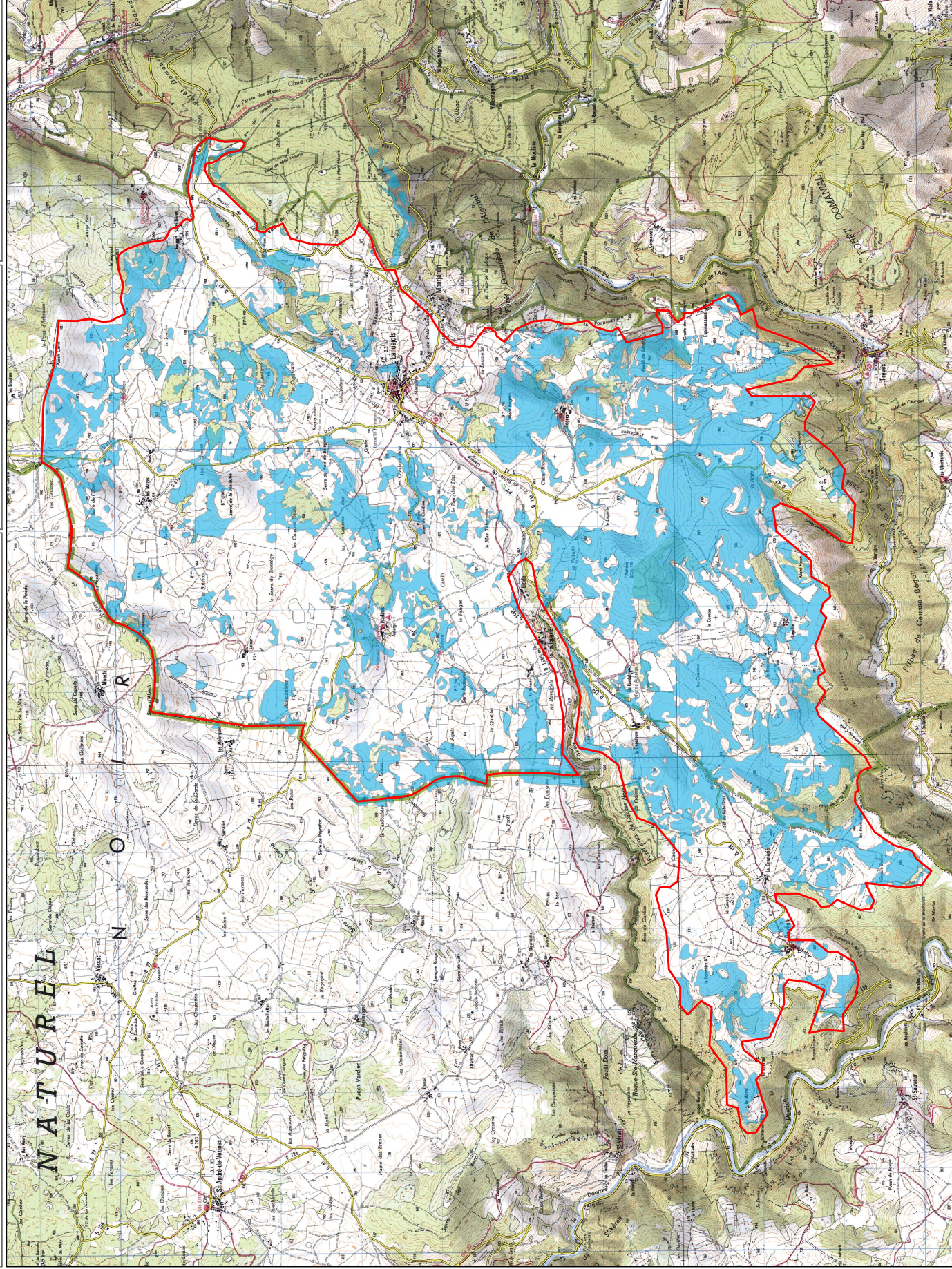
SOURCES : 2005
Données : DREAL LR 17/2000, 2010
Fond : Sand250, IGN, 2000
CARTOGRAPIE :
Centre de Ressources CPE des Causse Méridionales
05/2010

Document d'objectifs (DOCOB) des sites Natura 2000
FR 910 1381 et FR 911 2014 "Causse Noir"

HABITAT POTENTIEL DES OISEAUX D'INTERET COMMUNAUTAIRE Engoulevent d'Europe



CARTE N° 21

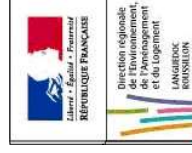
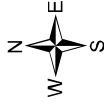
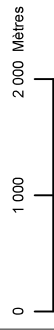
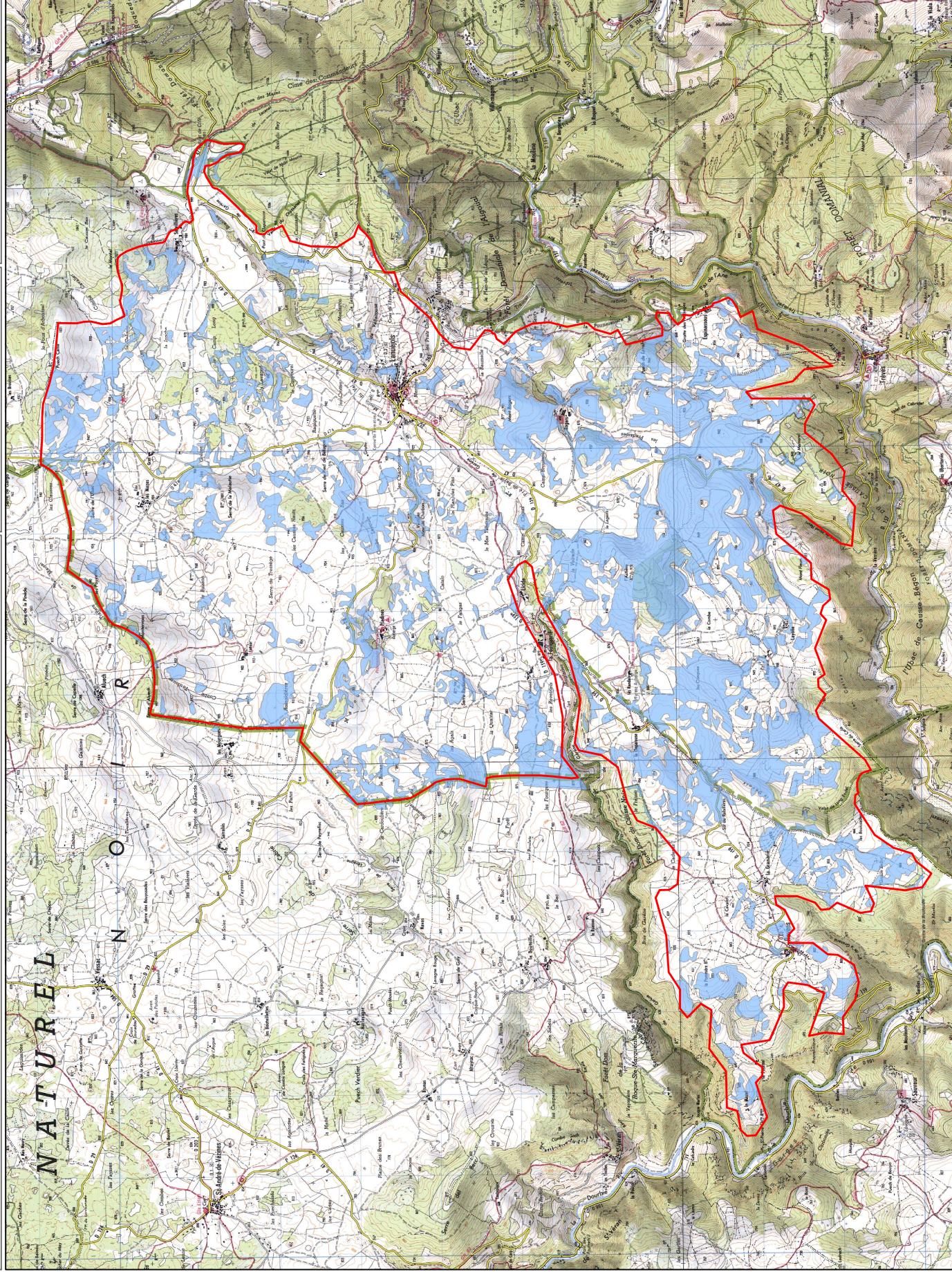


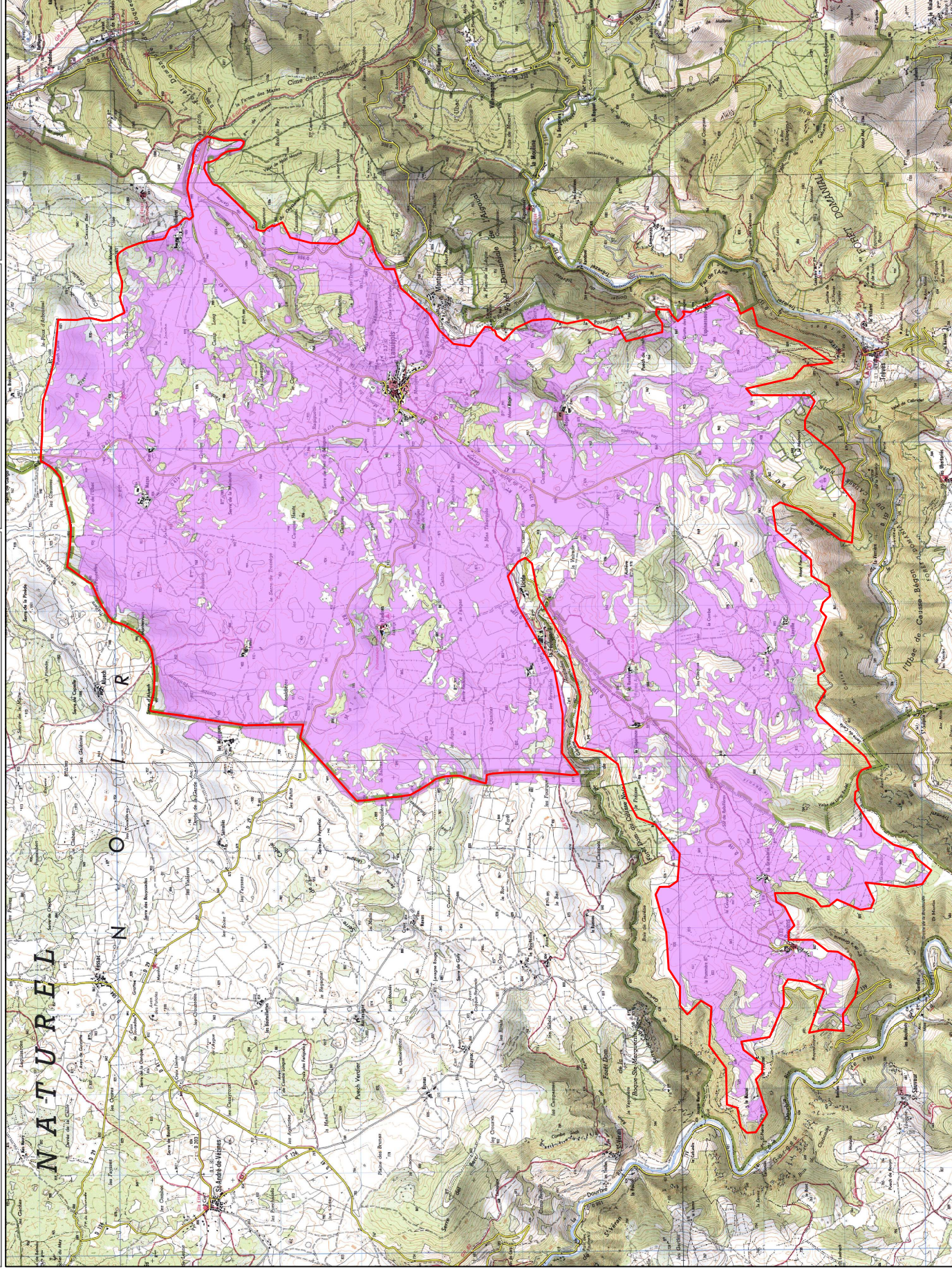
SOURCES :
Données : 2005
Périmètre : DREAL LR 17/2000, 2010
Fond : Sans250 IGN, 2000
CARTOGRAPIE :
Centre de Ressources CPE des Causse Méridionales
05/2010



HABITAT POTENTIEL DES OISEAUX D'INTERET COMMUNAUTAIRE Fauvette pitchou



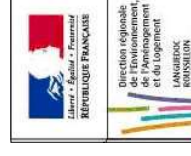
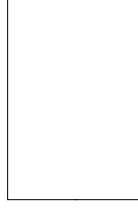
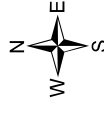
CARTE N°
22





 Périmètre ZPS
 Oedicnème criard
et Pipit rousseline

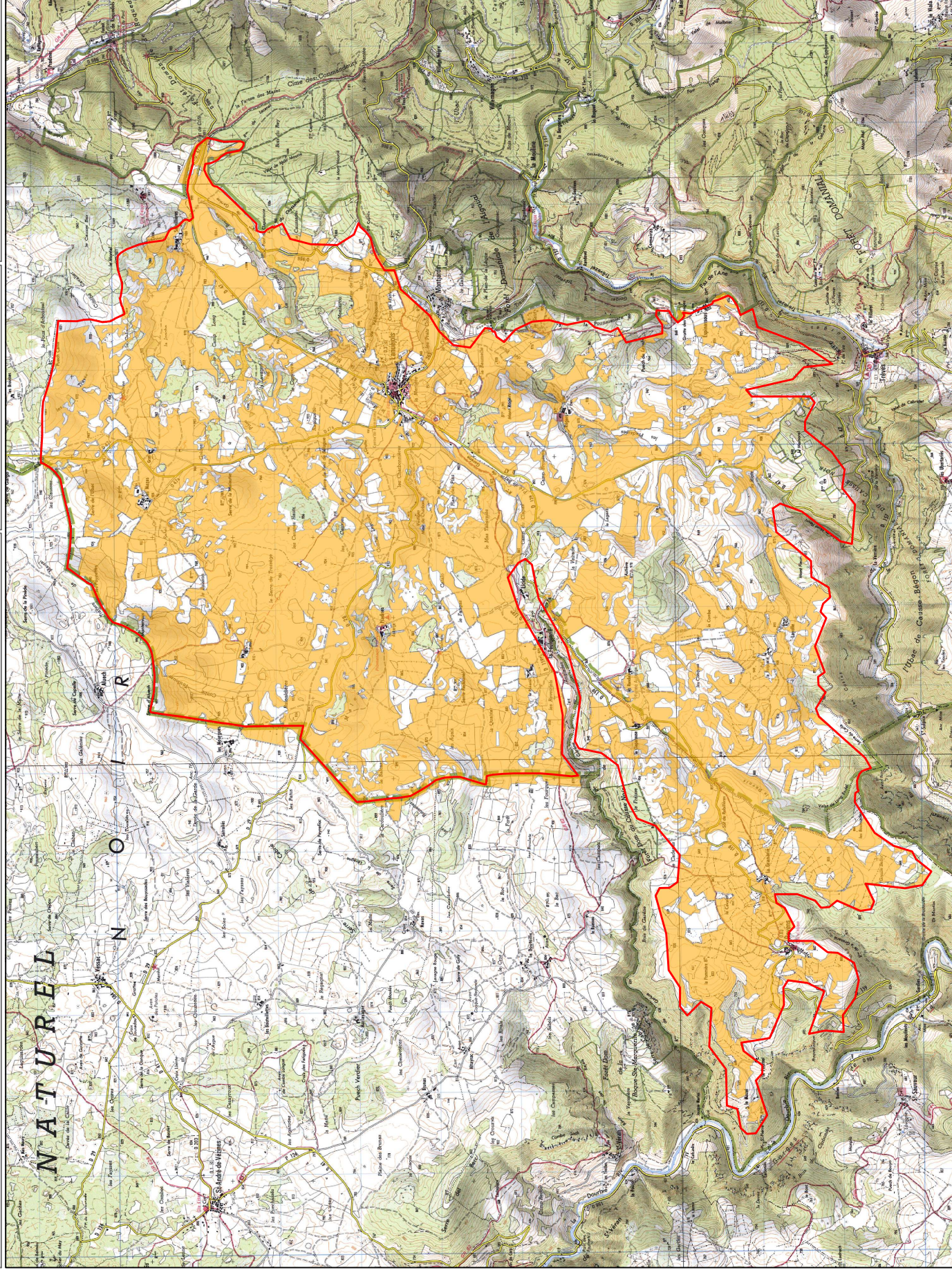
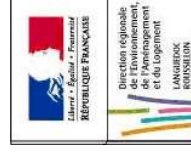
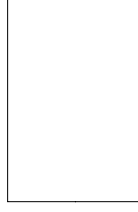
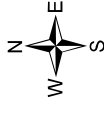
0 1 000 2 000 Mètres



HABITAT POTENTIEL DES OISEAUX D'INTERET COMMUNAUTAIRE Bruant ortolan



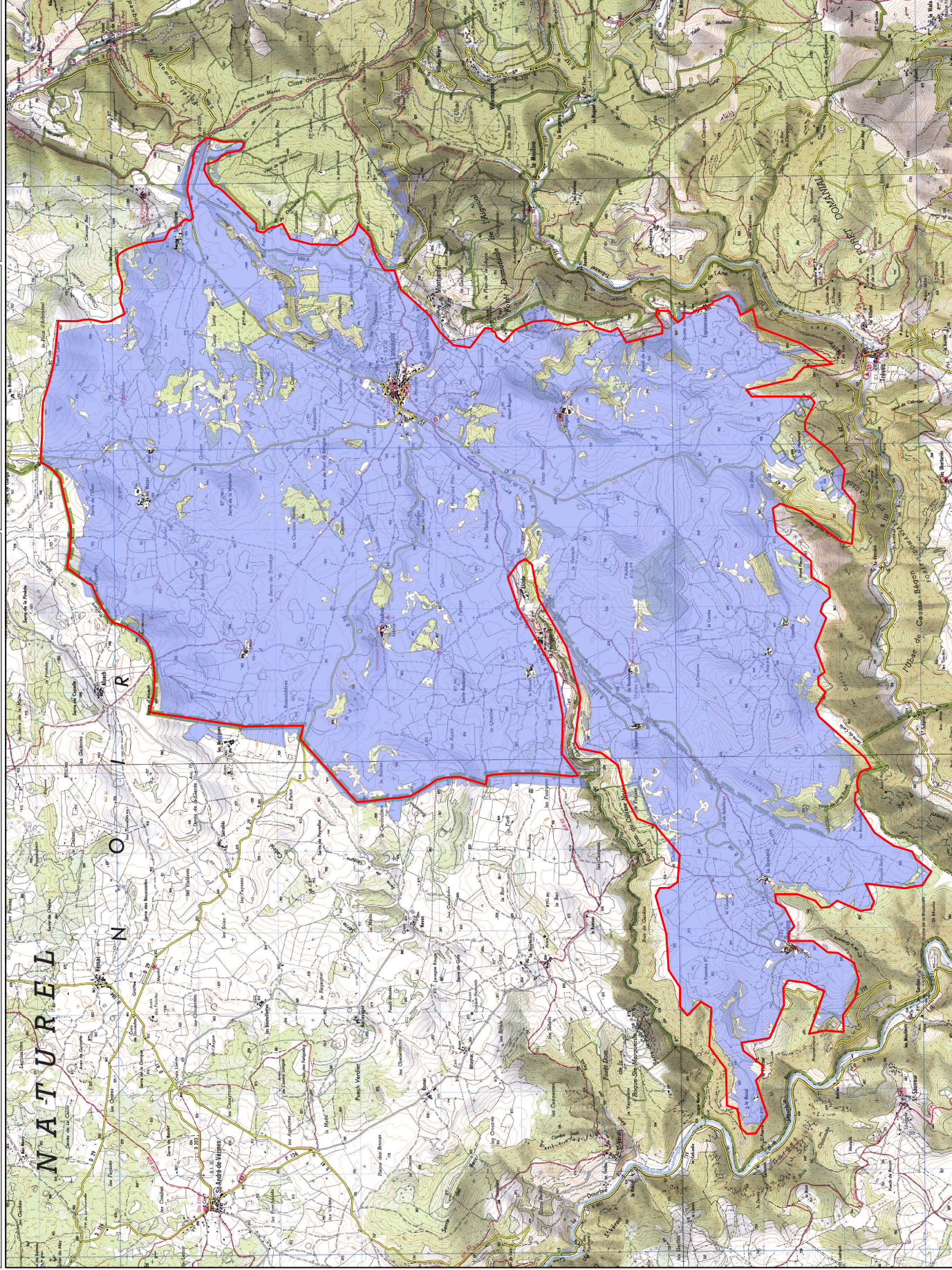
CARTE N°
24



HABITAT POTENTIEL DES OISEAUX D'INTERET COMMUNAUTAIRE Zone d'alimentation des rapaces

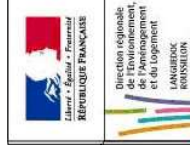
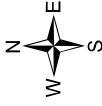


CARTE N° 25



-  Périmètre ZPS
-  Agile royal
- Circaète Jean-le-Blanc
- Busard Saint-Martin
- Busard Cendré
- Vautour fauve
- Faucon pèlerin
- Grand Duc d'Europe

0 1 000 2 000 Mètres



La Direction Départementale
des Territoires et de la Mer
du Gard

HABITAT POTENTIEL DES OISEAUX D'INTERET COMMUNAUTAIRE

Zone d'alimentation du Crave à bec rouge



CARTE N°
26

